

***This Solution requires only a single relocation of all City Administrative functions and avoids costly conflicts created by building Police HQ and City Hall in the same structure.***

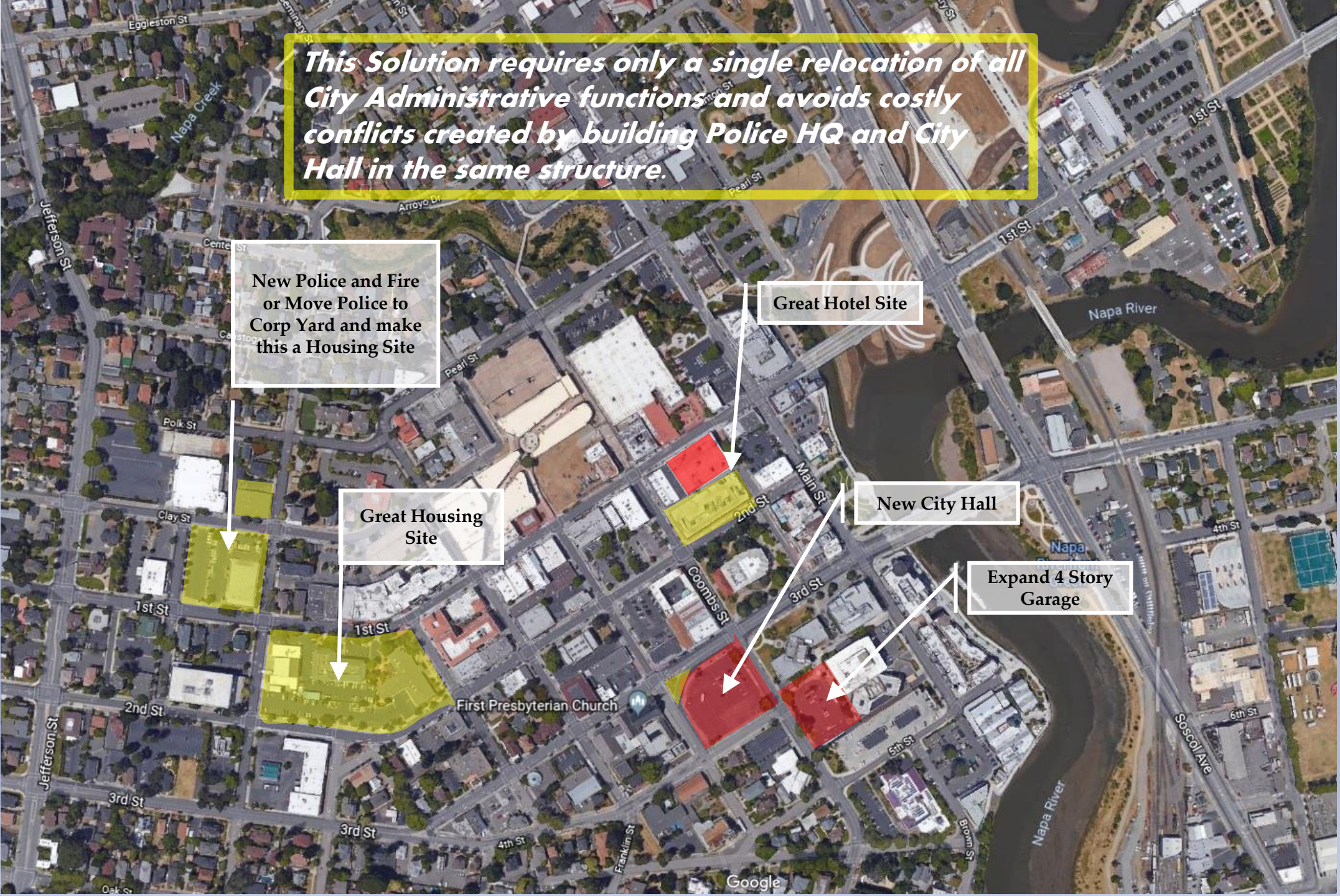
**New Police and Fire or Move Police to Corp Yard and make this a Housing Site**

**Great Hotel Site**

**Great Housing Site**

**New City Hall**

**Expand 4 Story Garage**





Consolidate Corp Yards  
and this land is freed for  
housing

Possible  
Alternate Police  
HQ

2 ac

City Corp Yard  
8 ac